

Series 25 Desalinators

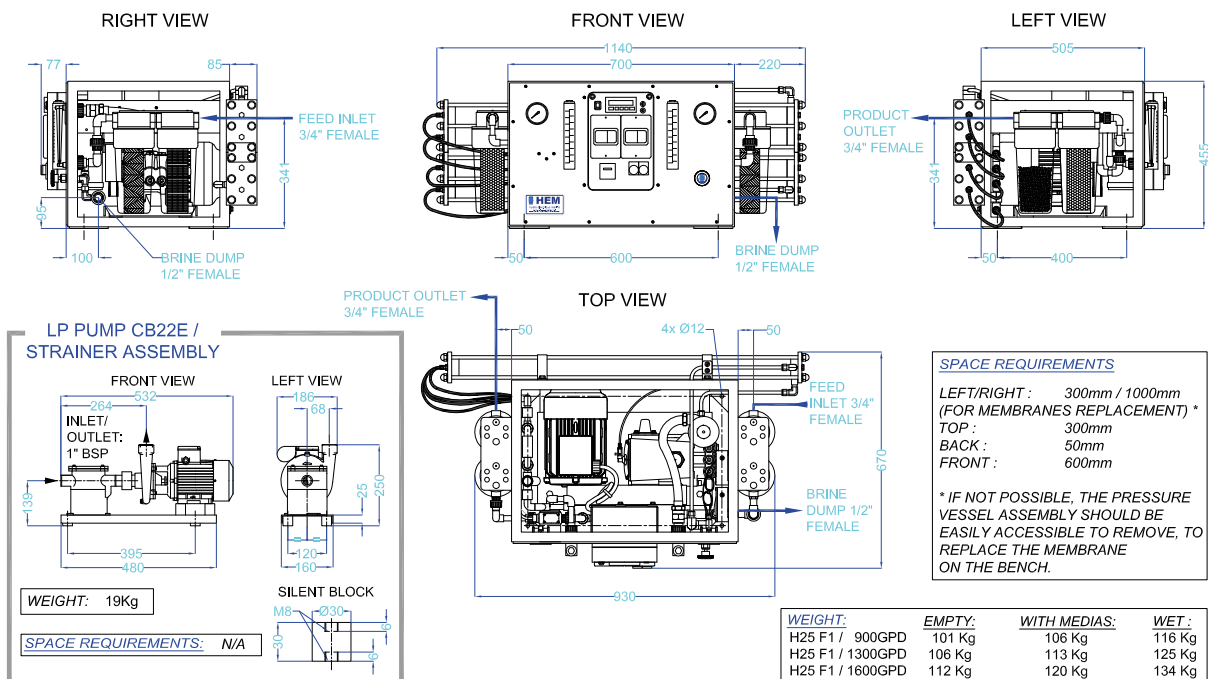
Capacities: 3,400 to 6,000 litres/day

The HEM Series 25 system is designed for medium sized yachts where a heavy duty unit is required, but one which is compact. Over the years, these units have supplied millions of tons of water for yachts all over the world.



The system is available as a monobloc unit enclosed in an aluminium frame. It can also be supplied in modular form as seven smaller modules with a completely pre-plumbed and electrically pre-connected main panel for flexible installation. The slow running HP pump (700 rpm) is driven by a large 2.2 kW motor, making the system larger and heavier than the lightweight 20 Series.

Dimensions



Series 25 Desalinators

Standard Equipment

FEEDWATER PUMP

Bronze centrifugal close coupled horizontal pump, assembled on a silent block mounted base plate together with a chromed bronze.

HIGH PRESSURE ASSEMBLY

Aluminium bronze HP pump with Ceramic plungers, HP pump fitted with Nitrogen filled pulsation dampener. The pump is tooth belt driven (to lower the pump speed) by a Tefc 2.2 kW IP55 electric main drive motor.

PREFILTER ASSEMBLY

Dual 10 inch prefilter assembly, selectivity 25 and 05 micron.

POST TREATMENT

Permeate pH neutralization through limestone filter, followed by active charcoal filtration.

PIPES AND FITTINGS

All pipes in PE, and PVC.

LP fittings in PP and PVC.

HP fittings in 316L Stainless Steel.

MEMBRANE PRESSURE VESSEL ASSEMBLY

TFC spiral wound membranes enclosed in compact design FRP pressure vessels with unique interconnection system and SST end caps.

FRAMES AND MOUNTING HARDWARE

Frames, and panels in aluminium, powder epoxy coated, white (RAL 9016).

INSTRUMENTATION AND CONTROLS

- Feedwater flowmeter
- Product flowmeter
- SST glycerine filled feedwater gauge
- SST glycerine filled HP gauge
- Manual SST pressure regulating valve
- Automatic shutdown by system overpressure
- Automatic shutdown by too low feedpressure
- Electric control box including hour meter, start & stop buttons, thermal protection for LP/HP pumps, remote alarm connections, alarm mute switch, digital permeate quality indicator
- Automatic bad quality water diversion system
- Permeate over pressure relief valve
- Brine over pressure relief valve

OPTIONAL EQUIPMENT

- Custom made prefilter system as required.
- Sandfilter assembly type 1035.
- Semi automatic flushing system.
- UV sterilizer.

Technical Specifications

Model	Dry Weight	LPD*	LPH*
H25 FRAME 900	116 Kg	3400	142
H25 FRAME 1300	125 Kg	4800	200
H25 FRAME 1600	134 Kg	6000	250
H25 KIT 900	115 Kg	3400	142
H25 KIT 1300	122 Kg	4800	200
H25 KIT 1600	130 Kg	6000	250

- Feedwater flow 4.2 gpm - 15 lpm.
- Feedwater pressure 20 psi / 1.4 bar.
- Salt rejection Min 98.6%.
- Normal pressure with seawater 850psi / 58 bars.
- Power requirement 2.75 kW.
- Power supply 400V-3PH-50Hz / 230V-1PH-50Hz

* Capacities based on feedwater 35000 ppm, 25°C, pH 8, operating pressure 850 psi. Contact HEM for more complete specifications.

