

Series 38 Duplex Desalinators

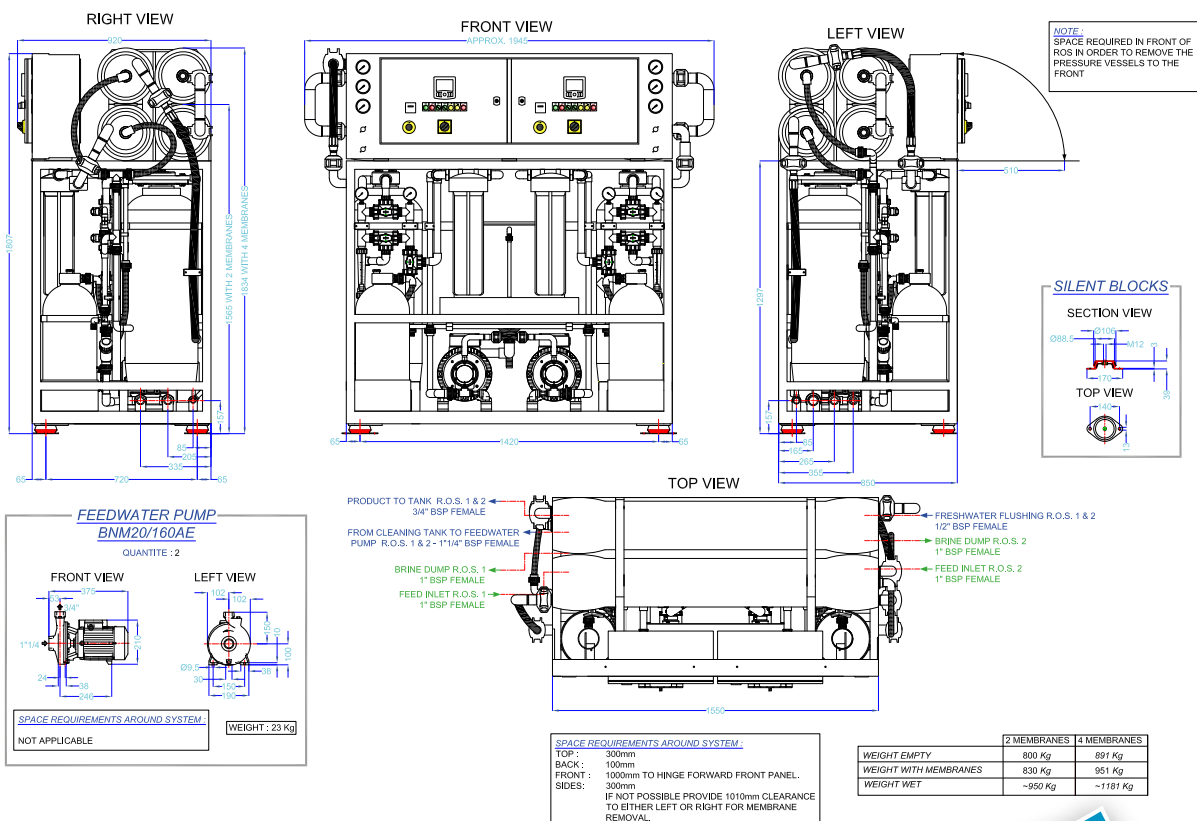
Capacities: 2 x 25,000 litres/day

The HEM 38 series have a number of improvements in comparison with the 30 Series. They are fitted with quieter SST axial piston HP pumps with variable drives and also feature automatic pressure build up and depressurisation. In terms of size, weight, price and long term reliability, the 38 Series is an ideal choice for tighter budgets.

The Duplex unit incorporates two independent systems comprising the feed water pumps, sandfilters and security filters on the inlet, pH neutralising filters on the product outlet as well as a membrane cleaning system. The separately supplied feed pumps should be installed below the waterline.



Dimensions



Series 38 Duplex Desalinators

Standard Equipment

FEEDWATER PUMP

Bronze centrifugal close coupled horizontal pumps are delivered as loose items and should be installed below the waterline.

HIGH PRESSURE ASSEMBLY

SST HP fixed displacement pumps. Each pump is directly driven by a TEFC 7.5 kW IP55 electric motor controlled by a variable frequency drive.

PREFILTRATION

Back-washable multi-media filters, followed by high capacity 05 micron cartridge filter assemblies, with industrial type housing in heavy duty polypropylene.

POST FILTRATION

Permeate pH neutralisation through limestone filter.

PIPES AND FITTINGS

All pipes in PP and PVC.

LP fittings in PP and PVC.

HP pressure fittings in 904L SST, with victaulic type couplings.

MEMBRANE PRESSURE VESSEL ASSEMBLY

TFC spiral wound membranes enclosed in FRP pressure vessels with stainless steel end-plug locking device.

FRAMES AND MOUNTING HARDWARE

Main frame in stainless steel, powder epoxy coated.

Colour white, RAL 9016 (standard). Other colours on request.

Electrical panels in powder epoxy coated steel.

INSTRUMENTATION AND CONTROLS

- Feed water flow meter
- Digital product flow meter with 4-20mA output
- Digital permeate quality indicator
- SST glycerine filled feed water gauges
- SST glycerine filled HP gauges
- SST glycerine filled Product pressure gauge
- Manual SST pressure regulating valve
- Semi-automatic fresh water flushing
- Automatic shutdown by system overpressure
- Automatic shutdown by too low feed pressure
- Automatic shutdown by over-production
- Automatic shutdown by remote stop
- Automatic bad quality water diversion system
- Brine over-pressure relief valve
- Permeate line vacuum breaker
- Sample valves for screen membrane
- Electrical control box including hour meter; start and stop buttons; thermal protection for LP/HP pumps; remote alarm connections; alarm mute switch; digital meters/indicators with a variable frequency drive for automatic pressure regulation.

OPTIONAL EQUIPMENT

- 4-20 mA output of permeate quality to remote monitoring

Technical Specifications

Model	Dry Weight	LPD *	LPH*
H38 DUPLEX 5600	951 Kg	2x 25,000	2x 1041

* Capacities based on feed water 35,000 ppm, 25°C, pH 8, operating pressure 850 psi.

Contact HEM for more complete specifications.

- Feed water flow 15 gpm - 58 lpm.
- Feed water pressure 35 psi / 2.5 bar.
- Salt rejection Min 98.6%.
- Normal pressure with sea water 850psi / 58 bars.
- Power requirement 8.6 kW.
- Power supply 400V-3PH-50Hz standard

