

Series H30 Duplex Mini

Capacities: 2x9m³; 2x13m³ or 2x15m³/day

The HEM 30 Duplex Mini system is designed to combine two complete RO systems in a very compact configuration. Unlike our standard HEM 30 Duplex, the sandfilter, limestone filter and cleaning tank are external to the RO frame.

The sandfilter and cleaning tank can be provided upon request. Capacities ranges from 2x 9 m³; 2x 13 m³ or 2x 15 m³/day (two, three or four membranes per system). The pressure vessel can be provided either attached to the frame or loose.

This is the ideal solution, where space and/or access are limited, especially for refit projects.



Sandfilter 1335
(Optional)



Limestone Filter 1023



Feedwater pump



FEED WATER PUMP

Bronze centrifugal close coupled horizontal pump.

HIGH PRESSURE ASSEMBLY

Compact, low vibration, super duplex stainless steel HP pump directly (without belts) coupled, with a 5.5 kW, 2950 rpm, TEFC IP 55 aluminium main drive motor.

PREFILTRATION

Sandfilter (optional) filtration followed by a high capacity pre-filter assembly, 05 micron.

POST FILTRATION

Permeate pH neutralisation through limestone filter.

PIPES AND FITTINGS

All pipes in PE, and PVC.

LP fittings in PP and PVC.

HP pressure fittings in marine grade 904L stainless steel with vitaulic type couplings.

MEMBRANE PRESSURE VESSEL ASSEMBLY

TFC spiral wound membranes enclosed in FRP pressure vessels with stainless steel end-plug locking device.

FRAMES AND MOUNTING HARDWARE

Main frame in powder epoxy coated stainless steel.

Colour white, RAL 9016. (standard)

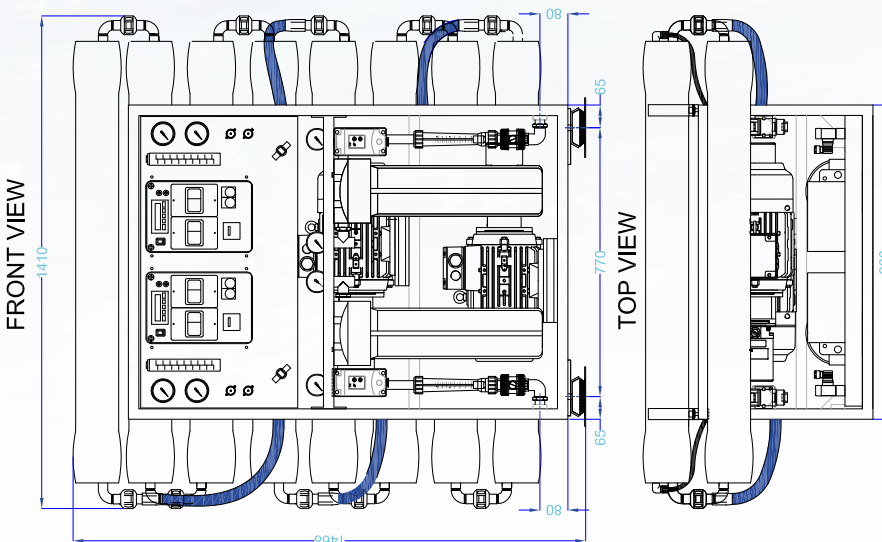
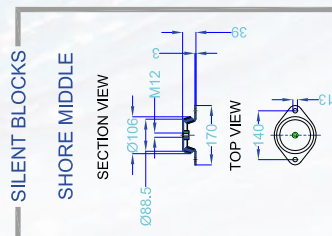
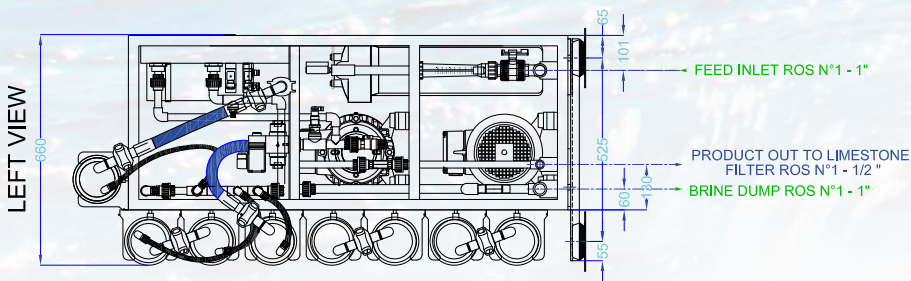
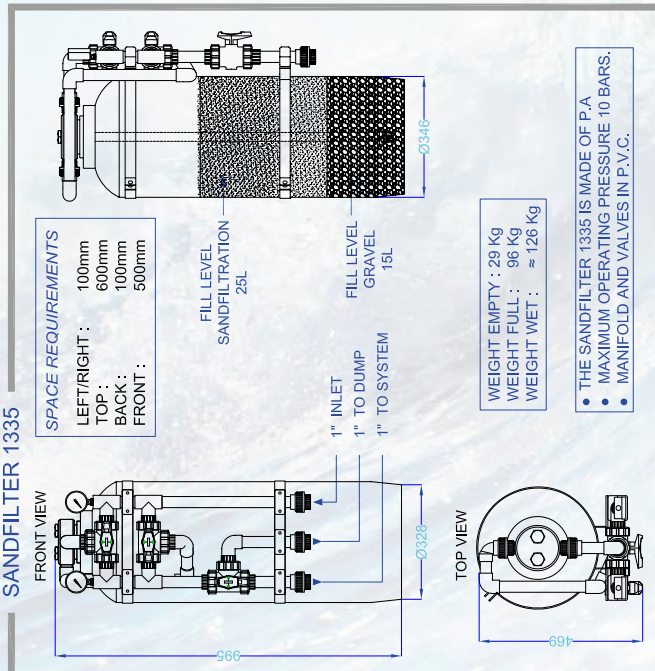
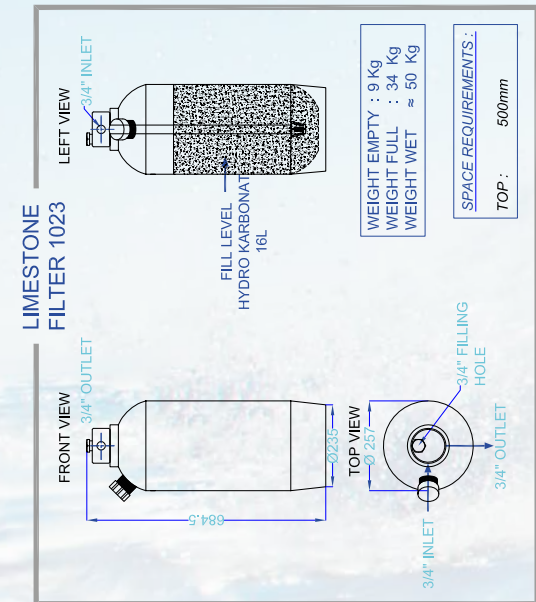
Panels in aluminium, powder epoxy coated.

INSTRUMENTATION AND CONTROLS

- Feedwater flowmeter
- Product flowmeter
- SST glycerine filled feedwater gauge
- SST glycerine filled product gauge
- SST glycerine filled HP gauge
- Manual SST pressure regulating valve
- Automatic shutdown by system overpressure
- Automatic shutdown by too low feedpressure
- Electric control box including hour meter, start & stop buttons, thermal protection for LP/HP pumps, remote alarm connections, alarm mute switch, digital temperature compensated permeate quality indicator
- Automatic bad quality water diversion system
- Permeate over pressure relief valve

OPTIONAL EQUIPMENT

- Custom made prefilter system as required.
- Sandfilter assembly type 1335.
- Semi automatic flushing system.
- Cleaning tank.



WEIGHT EMPTY	WEIGHT WITH MEMBRANES	WEIGHT WET
314 Kg	322Kg	≈365 Kg
344 Kg	368 Kg	≈420 Kg
374 Kg	406 Kg	≈467Kg

